



**2026
HOOF CARE
CATALOG**




ARMOR
ANIMAL HEALTH®

Division of 

Table of Contents

APPAREL	2
MIXING ACCESSORIES	3
ADHESIVES	3
BLOCKS & BOOTS	4 - 5
CUTTING WHEELS	6
GLOVES	7
HOOF KIT	8
HOOF KNIVES	8
HOOF NIPPERS	9
HOOF TREATMENTS	10 - 11
HOOF BATHS	12
MISCELLANEOUS	12
ANIMAL HANDLING	13
SHARPENING SUPPLIES	13
WRAPS, GAUZE, DUCT TAPE	14 - 15

 Armor Animal Health Favorites

Apparel



UDDER TECH BIB OVERALLS

Lightweight, comfortable and durable bibbed overalls. Designed with waterproof nylon in the front and a full-length mesh back.

14745 **small**

15048 **medium**

14744 **large**



GRUBS BOOTS

Waterproof boots keep feet warm, dry and protected in harsh and messy working conditions. Naturally lightweight, buoyant and comfortable to wear all day. Many variations available from Bowline Ankle to Frostline High, both pictured.



Scan the QR code to view all Grubs Boots options and details.



Mixing Accessories



BLACK MAGIC XXL BHA DISPENSER

Side loader dispenser for comfort and security while applying adhesives. Solid and ergonomic construction protects the cartridges from any damage while giving comfort to the applicant. Higher leverage that makes dispensing a smooth, one-handed application.

36319 **250 cc, also fits 200-210 cc**



DIAMOND FARRIER GLUE APPLICATOR

Heavy-duty dual component applicator made with stainless steel. Lighter than other dispensing guns and fits 200-210 mL glue cartridges.

27083 **210 mL**



QUICK BLOCK+ PREMIUM GLUE GUN

Heavy-duty dual component applicator. Semi-cradle frame for extra cartridge support. Horseshoe teeth used for fast cutting and polishing.

16721 **160 mL**



DUAL DISPENSER APPLICATOR

Equipped with dual dispenser, allowing simultaneous application of different substances. Features two settings for dispensing at a normal rate or faster rate.

28323 **210 cc**



MIXING ACCESSORIES

13908 **mixing cup - left - each**

13910 **mixing cup - right - each**

14511 **mixing sticks - each**

MIXING TIPS

ABAS #	Brand	Size	Length	Count
13938	QuickBlock	160 mL	One Size	12 ct
16012	QuickBlock	160 mL	One Size	100 ct
12756	QuickBlock	160 mL	One Size	25 ct
13939	QuickBlock	160 mL	One Size	2000 ct
13765	QuickBlock	200 mL	Short	25 ct
23580	QuickBlock	200 mL	Short	100 ct
13763	QuickBlock	200 mL	Short	1500 ct
20231	QuickBlock	200 mL	Long	25 ct
23579	QuickBlock	200 mL	Long	100 ct
23282	QuickBlock	200 mL	Long	1000 ct
33574	SHUFIX	200 mL	Long	1000 ct
34361	SHUFIX	200 mL	Long	100 ct
36320	SHUFIX XXL	250 mL	Long	100 ct



HOOF-IT LIQUID & POWDER

Hoof repair acrylic to properly glue and apply hoof blocks and boots to your dairy cattle. Flexible, durable, won't damage hooves. Quick and easy to use. Quick-curing, high-tech dental acrylic resin aids in proper gluing and application of hoof blocks and boots to dairy cattle. Slow cure is recommended in temperatures 80° F and above. Fast cure recommended for temperatures 70° F and cooler.

11004	473 mL fast cure liquid
11009	454 g slow cure powder
17999	454 g fast cure powder
23378	5 gal pail fast cure powder
23656	454 mL bottle (empty)



MASTERVET HOOF GLUE

Cures in 30 seconds, weight-bearing in 2-3 minutes. Uses standard mixing tip. Fresh glue guarantees the highest quality product every use.

27028	gold - 210 mL - winter less than 50°F
26210	silver - 210 mL - summer over 50°F



SHUFIX BLACK MAGIC

Economical, time-saving adhesive. Glued block can be left alone after 20 seconds, can bear animal's weight after 90 seconds. One year shelf life.

23779	210 cc - summer between 60 - 90° F
23741	210 cc - winter less than 60° F



SHUFIX BLACK MAGIC XXL

The same trusted Black Magic formula, now in a 250 cc cartridge, providing more blocks per cartridge. Easily see amount of product in tube. Easy tip insertion.

36318	250 cc - summer between 60 - 90° F
36317	250 cc - winter less than 60° F



HOOF TITE HOOF GRIP PRO

Created in partnership with The Hoof GP and Hoof Tite to be the strongest and most consistent glue on the market. Developed by pros for pros. Two-part urethane adhesive cures stronger and faster. Bright green-colored glue.

36385	220 mL
-------	--------



BOVI-BOND ADHESIVE

State-of-the-art, fast-setting urethane adhesive, used to glue wood, rubber or polyurethane blocks to bovine claws.

23532	210 mL
-------	--------



HOOF-IT QUICKBLOCK+ ADHESIVES

High-quality adhesive specifically designed for use on cattle hooves. It is a fast-drying, water-resistant adhesive that can be used to repair or rebuild hooves, as well as to bond shoes to the hoof.

16720	160 mL
13738	200 mL



XXL

SLASH BLOCKING COSTS through our premium-priced **XXL** packaging while enjoying the industry's **MOST INNOVATIVE** mix-tip placement

Easy fix mixing tips



NEW MIXERS



SKU 36320

SKU 36318

SKU 23779

SKU 36317

SKU 23741

Dosing Black Magic



Black Magic XXL



bovine-hoof-adhesives.com
or call 313 509 7860

IF YOU'RE THINKING
HOOF CARE, THINK:



SKU 24705

SKU 34361

SKU 36462

BHA
All season



Boviderma
Spray





ACCU BLOCK

Fits medial or lateral claws; no more left and right blocks! Optimum width creates stability during recovery that also allows for sufficient rest of diseased claw. Reduces claw trauma and made of long-lasting material to ensure original shape and structure.

22001	5" red
22004	5.5" red



AMISH OAK HOOF BLOCK

Solid oak hoof blocks. Blocks are slightly less rounded on edges and grooves are not as deep. While supplies last.

33407	med - 5-1/4"
33412	lg - 5-3/4"



BEECHWOOD HOOF BLOCK

Designed to fit the shape of the foot ergonomically, offering both protection and comfort. Durable for demanding conditions, cross-hatched surface to increase traction.

37218	small
37217	medium



BOHNING BLOCK

The right features to ensure great adhesion and durability. Developed with the cooperation of hoof trimming experts.

24721	sm - white
24722	lg - purple
28021	xl - yellow
34305	extra thick, sm - orange
34304	extra thick, lg - pink



BOVI-BOND 2.0 HOOF BLOCK

Designed with four embedded anchoring points so gluing of the block to the claw becomes a mechanical bond. Positioning points allow for proper glue distribution between the claw and the block. Made of 100% rubber composite.

34709	sm - 4-3/4"
36403	medium - 5"
34710	lg - 5-1/2"
36443	thin



BOVI-BOND POLY HOOF BLOCK

Made of high-wear resistant polyurethane. Allows for optimal glue distribution between the block and claw, with longer healing time and increased durability.

37252	small
37253	medium
37254	large



Country Wood Hoof Blocks

Large - Mini
Medium - Small

- ✓ Natural Fit
- ✓ Uniform Shape
- ✓ Multi-Groove Lock

Oak & Pine
Premium Wood

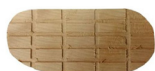
10 Count Packs!



Scan Now



Trusted Hoof Block Provider Since 2000



DEMOTEC WOOD BLOCK

Designed for use as an aid in the treatment of bovine lameness. Demotec blocks are applied with an adhesive to the healthy claw, transferring weight off the affected claw.

27463	sm
27464	lg



EASY BLOC

A plastic slip-on boot which fits onto the healthy claw, taking weight off the affected claw, providing immediate relief of pain.

15413	green - right
15411	green - left
15414	xl - green - right
15412	xl - green - left



COUNTRY WOOD WORKS OAK BLOCK

Universal design compatible with hoof block adhesives including resins and powders. Made from premium hard wood for optimal stability, durability and adhesion. Two sets of grooves create mechanical lock for longer block retention.

13955	mini - 10 ct
13957	sm - 10 ct
13958	md - 10 ct
13960	lg - 10 ct



COUNTRY WOOD WORKS PINE BLOCK

Easily adjust shape and size with grinder. Quick and easy to glue with lower cost applications, provides protection and support for healing.

17246	3/4" - 10 ct
-------	--------------



SMART BLOCK

An innovative block designed to reduce the amount of glue used, while creating the most secure bond possible. The ideal hoof block for herds having issues with 'white line disease' or sole ulcers.

20860	gray - left
20861	green - right



SMART ECO HOOF BLOCK

Designed with the same benefits as its predecessor, the Original Smart Block, but with a new double slope composite.

24409	sm
24408	lg



SHUFIX STRONG HOOF BLOCK

The plastic hoof block is a clean, fast and easy-to-use alternative to the commonly used wooden hoof block. With this newly developed block and ease of application, the hoof trimmer can glue the cow block onto the claw efficiently, no matter what the weather conditions are.

23758	black - each
-------	--------------



TP ORIGINAL HOOF BLOCK

Entirely made of polyurethane, highly abrasion-resistant material. The newly used technical concept improves the animal's walking welfare and offers an unmatched grip and comfort.

27270	orange - regular (original)
27272	orange - xxl
29561	orange - xxl thick
27273	blue - xxl
27638	orange - standard
28379	orange - thin
34347	blue - thin XXL



ULTRA BLOCK HOOF BLOCKS

Provides the ultimate fit and support to prevent damage. Enhances the healing process of treated cows. The coarse points of contact allow for advanced adhesion.

13748	blue - left
13749	pink - right
13750	green - universal



UNI-BLOCK HOOF BLOCKS

Long-wearing therapeutic wood block.

27255	5.2" x 7/8"
22017	5.5" x 7/8"



WEAR GUARD - HOOF BLOCK

Allows a cow 4 to 6 weeks to re-grow natural hooves. For use when the cow is walking slowly or gingerly or shows signs of excessive hoof wear. A Wear Guard can effectively prevent future lameness.

16757

Cutting Wheels

Roto-Clip™ 4" Diameter Wheels

Stock #	Weight	Slots	Inserts	Aggression Level	Cutting Description	Color
23007	6.3 oz	4 - open slot	flat	3, 4	Thin, lightweight, aggressive wheel; cuts on the outer edge	Black
17341	6.5 oz	3 - open slot	flat	4	Thin, lightweight, aggressive wheel; cuts on the outer edge	Black
14164	7.8 oz	4 - open slot	flat	2, 3	Less weight creates less torque. For maintenance trimming or fine-tuning show animals	Red
14186*	9.0 oz	4 - open slot	round	5	For excessive growth or hard hooves	Purple
12060*	9.2 oz	3 - open slot	round	5	Very aggressive wheel	Purple

*Round insert wheels are not recommended by the manufacturer for tilt-table applications.

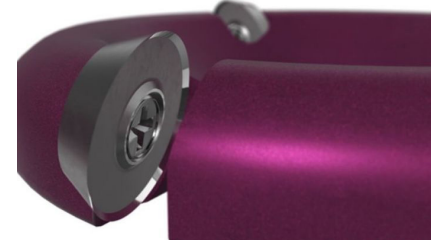
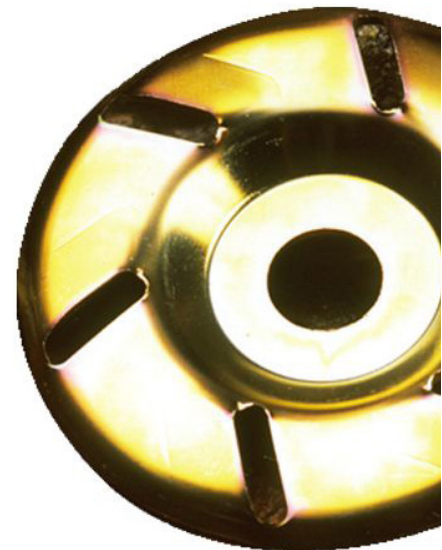
Roto-Clip™ 4.5" Diameter Wheels

Stock #	Weight	Slots	Inserts	Aggression Level	Cutting Description	Color
14162	8.7 oz	6 - closed slot	flat	1	Beginner wheel	Gold
14184	9.6 oz	4 - open slot	flat	2	Ideal for large herds and professional trimmers	Blue
12362	9.6 oz	4 - open slot	flat	2	Aggressive wheel	Gold
14165	9.7 oz	6 - open slot	flat	1, 2	Ideal for large herds and professional trimmers	Red
12315	9.7 oz	6 - open slot	flat	1, 2	Intermediate/aggressive wheel used for untrimmed hooves	Green
14169*	9.9 oz	6 - open slot	round	3, 4	Used primarily for herds with hard hooves and large growths	Black/Silver
14185*	10.3 oz	4 - open slot	round	4	Works great on animals with excessive growth or hard hooves	Black

*Round insert wheels are not recommended by the manufacturer for tilt-table applications.

Replacement Inserts and Hardware

Stock #	Item	
17044	Armor flat 2 mm inserts	Available in box of 10
17045	Armor flat 3 mm inserts	Available in box of 10
14170	Roto-Clip™ round inserts	Available in box of 10
14172	Roto-Clip™ round inserts - pre-sharpened	Available in box of 10
14166	Roto-Clip™ flat inserts	Available in box of 10
14168	Roto-Clip™ flat inserts - pre-sharpened	Available in box of 10
26821	Mastervet flat inserts	Available in box of 10
26822	Mastervet flat pre-sharp inserts	Available in box of 10
26824	Mastervet round inserts	Available in box of 10
14183	Replacement screw for flat inserts	Available in box of 10
14182	Replacement screw for round inserts	Available in box of 10
17427	Stainless steel replacement screws	10 ct
12481	Roto-Clip™ screwdriver	each



RASP WHEEL

High quality and durable abrasive disc designed for cleaning and trimming softer hooves. Fits 4.5 inch angle grinder, complete with rubber ring to reduce vibration.

17186 **more aggressive**

17185 **less aggressive**

Gloves



ACTIVARMR ACTIVE GLOVES

Jersey-lined work gloves with a nitrile coating, for hard-wearing protection and comfort.

28346 11" - tan - size 9 - pair

28347 11" - tan - size 10 - pair

GLOVEPLUS POWDER FREE NITRILE GLOVES

Black, nitrile disposable glove. Features raised diamond texture to channel away liquids for first-rate gripping power in wet conditions.

20242 black - sm - 100 ct

14785 black - med - 100 ct

14786 black - lg - 100 ct

14787 black - xl - 100 ct



MILKER'S HELPERS NITRILE PF GLOVES

A low-powder latex-free, disposable glove with textured fingers made of a unique blend of synthetic nitrile.

13773 blue - sm - 100 ct

13774 blue - med - 100 ct

13775 blue - lg - 100 ct

13776 blue - xl - 100 ct



JOIN OUR HOOF TRIMMER FACEBOOK COMMUNITY



Armor Animal Health - Hoof Trimmer Community

Private group

+ Invite Share Joined

Stay up-to-date on new and innovative products, industry news, promotions & so much more!

SCAN THE QR CODE NOW!



Specialty Herd Solutions

- Keep herds healthy, milking, and revenue generating
- Better biocide than zinc/copper sulfates and no chemical odor
- Highly concentrated formula delivers more treatment per cow
- Fortifies and improves hoof hardness, and conditioning

©2026 Specialty Sales LLC. All rights reserved.



HoofStrong®



Easy to use topical spray

Available in 1-quart or 1-gallon options
1-gallon available by special order only

Hoof Kits

HOOF BLOCK PREMIUM KIT



Consists of a set of blocks that are inserted onto the hoof to stabilize the animal's gait and prevent further injury.

12549 md

NEOGEN EB112 DEMOTEC EASY BLOC KIT

Designed to minimize lameness and provide fast, easy treatment for relief from pain and substantial increase in milk production. Plastic slip-on boot which fits onto the healthy claw, taking weight off the affected claw, for the immediate relief of pain. Has a flexible upper wall for better fit and more complete bonding. Optimum design avoids all possible pressure points. Provides greater stability. Premature breakdown of the sole is virtually eliminated.



15416 left & right - 12 ct

15417 left - 12 ct

15419 right - 12 ct

15421 left & left - xl - 12 ct

Hoof Knives

DICK BISON HOOF KNIVES

Developed with professional hoof trimmers and is very popular in the hoof care of both horses and cows. Ideal for cutting out grooves and defects in the hoof.



20271 bison right short narrow

20270 bison left short narrow

20274 economic double sided

20273 expert grip left short - composite handle

20272 expert grip right short - composite handle

EXPERT HOOF KNIFE

Made from carbon steel and is equipped with a polished straight blade with extra sharp 0°- cutting edge geometry for long performance and the perfect solution for hard claws and hooves. The best dynamic effect is ensured through the joint-gentle and hygienic 2-component handle in combination with the 0° scalpel cutting edge shape blade from high alloyed steel.



21327 right long narrow

LOOP HOOF KNIFE

This is the loop blade style of hoof knife for trimming the frog and interior area of the hoof. Helps remove debris, necrotic tissue and cleans the frog area. Very popular hoof knife.



20198 double edge

NARROW BLADE PREMIUM HOOF KNIFE

Cross Canada's hoof knives are made of premium-grade stainless steel passivated blade for long-lasting sharpness. Manufactured through forged process and rust-free steel with strong screw system to avoid misallocation of stem from wooden handle.



28378 left

28377 right

"THE KNIFE" HOOF KNIVES

High quality steel from the USA makes this hoof knife easy to sharpen. Sharp stainless steel designed to hold an edge. Wood handle with drop blade.



15743 original left

15744 original left long

15746 original right

15745 original right long

13717 left - classic carbon blade

13716 right - classic carbon blade

14725 right long - classic carbon blade

Hoof Knives

AGRI PRO ECONOMY HOOF KNIFE

Wide stainless steel blade with quality wood handle attached with rivets. Blade is 3/4" at the base and 3" long. Made of high quality, non-rusting steel.



30064 left - 8"

38021 double edge - 8"

AESCULAP HOOF KNIVES

Famous for being extremely durable. The blade as well as the ergonomic handle meet highest demands, and this has been known and appreciated by professional users for many years.



16274 left narrow

16277 double edge wide

16273 right narrow

16279 left ground wire

16276 double edge narrow

16278 right ground wire

BOVI-VET HOOF KNIFE

State-of-the-art hoof knife with a special design that compliments the contour of the sole.



17247 double edge

DIAMOND FARRIER HOOF KNIVES

Designed with premium-quality materials. Has a stainless steel blade and hardwood handle.



27280 double edge

27084 narrow right

27085 narrow left

27752 right wide

27753 left wide

Hoof Nippers



FOOT ROT SHEAR

Stainless steel, spring loaded. Comes with lock. Has sharp, pointed double stainless steel blades. The top blade is serrated to cut hooves with ease. Blue powder coated handle.

16357 9"



DIAMOND HOOF NIPPER

Precision-forged from high-quality steel, offering maximum leverage and cutting ability. For cutting hooves only. Wide cutting edges and solid geometrics offer reliable cutting, even under tough conditions. Exact touch point helps prevent blades from touching before cutting, keeping them sharp and in good condition for a long time. Rounded corners and strengthened jaw provide superior durability and a solid feel that's never springy. Well-balanced and suitable for a variety of hoof sizes.

12638 15"



MOUNTAIN MEADOWS HOOF NIPPER

This double-cutting jaw hoof nipper easily cuts through hooves with little effort. Will also cut through horseshoe nails. Economically priced. Made in the USA from high-quality steel and treated for wear resistance.

11464 neutral cut



NORDIC FORGE HOOF NIPPER

The Viking Farrier Nippers are forged from high quality tool steel, machined to precise tolerances and heat treated for wear resistance.

12411 14"



NORDIC FORGE HOOF NIPPER

Non-stick coated, high carbon-steel blades that retain sharpness. Give optimum strength and hardness. Blade tension is adjustable.

31938

STAY CONNECTED!

Scan the QR Code to LIKE us on Facebook



 **DICK**
Traditionsmarke der Profis



YOUR TOOL AS INDIVIDUAL AS YOU ARE

Hoof knives . Hoof rasps . Hammer . Sharpening tools

www.dick.de

Hoof Treatments



ANIMED EPSOM SALT

Supports normal muscle and nervous systems. Effectively combats symptoms of magnesium deficiency including sensitivity to environmental stress and poor tolerance to work.

13066 8 lb



EPSOM SALT POULTICE

A topical gel designed for external application for temporary relief of minor pains, bruises and sprains associated with muscles and joints for horse and rider. Provides the benefits of epsom salt in a rub.

19169 20 oz
25327 20 oz flow gel



ALUSHIELD AEROSOL SPRAY-ON BANDAGE

A convenient, water-resistant aerosol bandage that creates a protective barrier against external irritants in small and large animals. Allows wounds to breathe while healing.

11812 2.6 oz



EPSOM SALT

Soaking aid for minor sprains and bruises. Saline laxative for relief of occasional constipation.

13066 8 lb



HEALMAX

Effective remedy for dairy cows suffering symptoms of lameness and hoof lesions. Heals lameness caused by Mortellaro and foot rot.

21237 paste - 10 lbs
11466 spray - 1 qt
11471 spray - 1 gal



BARRIER II WOUND CARE SPRAY WITH PAIN RELIEF

Kills up to 99% of surface germs in 15 seconds or less. Contains povidone-iodine (2% available iodine), ethyl alcohol, isopropyl alcohol and lidocaine for pain relief. Dries in approximately 3 minutes and forms a durable film coating which can last up to 24 hours.

12942 16 oz
29887 gal



BHA BOVIDERMA SPRAY

Grooming aid administered to the animal's skin to help maintain optimal skin conditions. Works fast and effectively. Easily spreadable, strong, adhesive gel containing aloe vera.

24705 250 mL



HOOF HEAL WITH BRUSH

Nourishing hoof dressing to keep hooves at optimal moisture. Anti-bacterial and anti-fungal to help prevent infections. All weather, brush-on formula.

18754 16 oz



BOVI-MYCIN PASTE

A safe, effective hoof care wound-relief product made with organic materials, including tea tree oil to promote natural healing with no discomfort. Scientific, waterproof formula penetrates and sticks to all wounds. Does not contain antibiotics. Ideal for treating hairy heel warts and foot abscesses.

29501 24 oz
24171 7 lbs



HOOF 'N HEAL SQUEEZE BOTTLE

For hoof rot, foot rot and foot scald. Penetrates deep into the hoof to attack infection quickly. Topical anti-bacterial. Won't cause discoloration.

12203 16 oz



BOVI-MYCIN POWDER

A safe, effective, antibiotic-free hoof care wound relief solution. Made with organic materials and a non-toxic molecular acid compound to promote natural healing with no discomfort. Does not contain antibiotics, only organic-certified materials.

24172 10 lbs



HOOF 1-2-3 PHASE 3

Offers 13% zinc complex in combination with a 19.80% copper pentahydrate to provide formidable dual therapy for most resistant bacteria/fungi-causing hoof maladies. Utilizes water-based absorption technology (Stabitol) into the hoof area, controlling bacteria and fungi. Phase 1 and Phase 2 sold separately.

23054 gal
23391 15 gal



DRAWING SALVE

Apply as an ointment to weak, brittle hooves and nails in horses and dogs. Can be used as a skin antiseptic to promote healing of minor abrasions and inflammations and as an agent for soothing and softening areas of skin irritation.

11813 14 oz



KOPERTOX

Recommended as an aid in treating equine hooves for thrush due to organisms susceptible to copper naphthenate. KOPERTOX provides water-resistant protection without bandaging.

17867 16 oz



MASTERVET MASTER HOOF TOPICAL

Carries a very high percentage copper sulfate to handle some of the most difficult hoof and foot problems. Recently reformulated to be more user-friendly. Can be used on all livestock with care.

28085 10 lbs



QUICKHIT GEL & SPRAY

Developed to help gain prompt control over foot warts in dairy cattle. QuickHit is based on an exclusive low pH technology combined with copper, zinc and surfactant to produce a highly effective solution.

13071 gel - gal

10505 gel - 32 oz

10500 topical spray - 2.5 gal

10501 topical spray - 32 oz

10502 topical spray - gal



TOP SHOT SPRAY

One shot of Top Shot™ topical spray fights off hairy heel warts. No wrapping or blocking. Non-formaldehyde and copper sulfate formula.

29240 1 qt



TOPICAL FUNGICIDE

A topical solution that aids in the control of summer itch, girth itch, foot rot, ringworm and other fungal problems. Contains 0.15% Benzalkonium Chloride with allantoin as an inactive ingredient.

13246 32 oz

13245 16 oz



SALICYLIC ACID POWDER USP 100%

Provides localized treatment for digital dermatitis. Effective topical treatment for hairy heel warts without the use of systemic prescription antibiotics.

34417 16 oz powder

37361 2 lb powder

Product on backorder?

Please call Armor Animal Health for current availability. Call your sales rep directly or see back cover for contact information.



Hoof Baths



ACIDIFIED COPPER SULFATE

Specifically formulated for use in the dairy industry. The product offers benefits over more traditional footbaths based on tetracycline, formaldehyde, copper sulfate or other chemicals. The lower pH insures that more copper goes into solution, reducing your costs and providing a more efficient operation. The product is especially efficient in areas with hard water.

19871 **50 lbs - stocked in PA**

12169 **50 lbs - stocked in WI**



FORMALDEHYDE 37%

37% formaldehyde can be used with automated or manual protocols and has a long, stable shelf life. Formaldehyde is intended for use in the most critical applications in microscopy and histology. This formulation is stabilized with methanol.

13445 **15 gal**

17071 **55 gal**



HOOF ZINK 220

Patent-pending, economical footbath concentrate for use in the treatment and control of hairy heel warts caused by treponema bacteria strains, as well as foot rot caused by Fusobacterium necrophorum and Prevotella melaninogenica. Mixes into solution easily and contains trace minerals similar to copper sulfate and zinc sulfate. It will not freeze unless surrounding temperatures drop below negative 40°F.

18762 **15 gal**

21875 **500 gal**



MULTI MINERAL COPPER SULFATE

Dramatically improves the effectiveness of conventional footbath solutions, cuts copper sulfate, zinc sulfate or formaldehyde usage in about half. Best results with less material and a lower cost. Reduces copper disposal by more than 40%. Formula of copper sulfate pentahydrate, citric acid and zinc sulfate which offers more effective results (versus copper sulfate or zinc sulfate alone) on certain bacterial strains which are known to cause hairy warts.

21951 **50 lbs**



POLY FOOTBATH

Polydome footbath helps prevent hoof rot and heel erosion and reduces lameness. A disinfectant solution (copper sulfate mixed with water) used in the footbath will kill or inhibit bacterial infections such as foot rot and heel erosion.

15945 **36" x 78" x 6"**

15946 **54" x 84" x 6"**



ROTATIONAL ZINC

Specially formulated to be used in a rotational program of products for the prevention of hairy warts. Safe and effective treatment of bacterial and fungal hoof problems.

13674 **gal**



SUPER BOOSTER FOOTBATH CONCENTRATE

Controls warts, rot and improves hoof integrity. Significantly reduces copper sulfate usage. Decreases heavy metal soil loading. Lowers foot bath pH. Energizes your footbath. Ionizes 100% of zinc and copper. Makes every ounce of zinc or copper more aggressive. Easy mixing.

16839 **5 gal**

10496 **15 gal**

18014 **50 lbs**



TRIPLE PLAY HOOF SOLUTION

Mix with water to create final solution for use in footbaths for cattle. Recommended for use every other day for maintaining healthy hooves.

23423 **55 gal**

23422 **275 gal**

Miscellaneous



GRINDER PLASTIC GUARD SLEEVE AND STRAP

27852



HOOF CHECKER

Designed to provide objective measurements to the claw trimming process, the Hoof Checker is an easy-to-use device that serves five functions that are useful when trimming claws.

12701



HOOF TESTER

Stainless steel hoof testers, simple and easy to use. Open easily with one hand, press softly down onto the sole of the hoof and wait to see if the animal gives you a reaction. Can be a great indicator of stone bruises or abscesses.

14091 **opens to 6.5"**

Animal Handling



FLEX CANE

Coburn Flex Canes for sorting livestock are made from an ultra-high molecular-weight polymer. Livestock canes are great for sorting cattle, sheep and goats—on the farm, at shows and in auction rings.

11945	38" - blue	11944	38" - pink
11947	38" - green		



HOT SHOT POWERMITE

Handheld livestock prod, designed for close-in work. Ideal for veterinarians, great for use on wet animals. High-impact plastic case that fits easily into your pocket.

12138	each
-------	------



SORTING PADDLE

Delivers a dual response for sorting livestock of all types. The brightly colored, 6.25 inch-wide paddle creates a visual barrier to guide livestock; they also respond to the sound of the BBs inside the paddle.

12142	42"
-------	-----



SHARPSHOCK RECHARGEABLE HANDLE

An economical alternative to more expensive prods. It has a separate on/off switch and power button, a completely sealed and waterproof motor and a no-tool battery compartment. It is durable, and has a ergonomic handle and a water tight gasket at battery department. Battery/Wall Adapter/Charger are included.

21999	handle
22319	short - 13" shaft
22321	medium - 23" shaft
22320	large - 33" shaft
22318	wall charger battery pack



STOCK SHOCK

Housed in a tough, structural grade plastic case, the Springer Magrath Stock Shock Replacement Power Pack has a high output shock, sealed motor and long battery life.

15815	power pack	15816	shock shaft - 22"
10674	shock shaft - 9"	15818	shock shaft - 34"



Sharpening Supplies



ANVIL DIAMOND HONE SHARPENING TOOL

Diamond coated, its sharpening surface measures 1/2" x 5" with plastic handle and rounded edges. The rounded edge design on this knife sharpening tool allows for easy sharpening on the hook part of "The Knife" hoof knife or any similar knife and lawn shears.

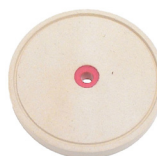
14316	19 cm
-------	-------



DIAMOND SHARPENER

Diamond-coated Steel Rod Retractable Sharpener features an unbreakable, diamond-coated steel rod, which is specially designed to sharpen all types of knives, including serrated. Multiple layers of medium grit, monocrystalline diamonds make sharpening quick and easy, while still giving you that razor sharp edge on your knives, tools or hooks.

15717



FOOT PRO FELT GROOVED SHARPENING DISC

Made from medium-density felt. Used for final polishing of knife edges and cutting tools. Supplied with a groove for sharpening the hook of the knife.

30073	6"
-------	----



HOOF TANGED RASP

Hoof rasps are a staple in every barn or stable tack room and come in handy in the event of a pulled shoe - rounding the edge of the hoof will help lessen the degree of damage until a farrier can re-attach a shoe.

22179	14"
-------	-----



RUBBER SHARPENING DISC

Manufactured from very hard rubber compound and can be attached to an existing bench grinder. Used for sharpening hoof knives. To be used in conjunction with the cotton path disc. 12-inch center hole.

12698	6" diameter
13747	7" diameter



SANDING BELT PACK

The 12 pack fine/md grit assortment is a great selection and great value to tackle any sharpening or sanding project. Pack contains 2 each: 220 grit, 400 grit, 600 grit, 800 grit, 1000 grit and 2000 grit (aluminum oxide) industrial quality sanding belts.

13737	1" x 30" fine/md assortment
-------	-----------------------------



SHARPENING WHEEL PASTE

Electric sharpening rubber disk for use in an electric bench grinder at slow speed.

12696

Wraps, Gauze, Duct Tape



ADAPTARAP™ DISSOLVABLE HOOF WRAP

The labor-saving dissolvable hoof bandage feels and looks like plastic but is made from a starch-based material that is fully biodegradable. The non-elastic material ensures a close fit without increasing the risk of pressure wounds.

27627 5" - blue/green - 3 ct



COFLEX WRAP

Offers a controlled compression, with non-slip support that will not constrict over time. You control the desired compression level. Once wrapped, the self-adhesive bandage will not loosen or tighten and will remain secure.

11510	4" rainbow	18 ct	11553	4" green	each
11554	4" rainbow	100 ct	11567	4" neon green	each
23951	4" multicolor	18 ct	11568	4" purple	each
11552	4" black	each	27987	4" teal	each
11550	4" neon pink	each	30186	4" light blue	each
11548	4" red	each	30188	4" tan	each
11549	4" royal blue	each	19969	4" white	each



ASI WRAP IT UP HOOF WRAP

Economical, cohesive flexible bandage. Features a stretchy and flexible material that works great as a bandage. Often used for equine, but can be used on pets, livestock or humans as well.

36404	4" - green	36407	4" - white
36406	4" - hot lime green	36408	4" - 18 ct rainbow
36405	4" - hot pink		

BHA BIO WRAP

Self-adhesive to eliminate the need for tape or clamps during application. Does not stick to hair or skin.



36462 4" - white

BHA HOOF WRAP

Self-adhering cohesive wrap, easy to remove without sticking to skin or fur. Works well in cold weather. Sweat and water-resistant.



28509 4" - green - 144 ct



MASTER-WRAP

Cohesive flexible bandage manufactured for bovine hoof trimmers that can also be used as a lightweight wound dressing. Individually wrapped.

29992 4" fl. green / fl. pink - 100 ct



MUELLER HOOF WRAP

A flexible, elastic self-adhering bandage that is strong and provides firm support and protection with low risk of bandage slipping, allowing for full mobility; 5 yd rolls.

33247	4" - assorted - 96 ct	33243	4" - fluorescent pink - 96 ct
33244	4" - fluorescent green - 96 ct	33248	4" - red - 96 ct
33245	4" - fluorescent purple - 96 ct	33246	4" - sky blue - 96 ct

Ovik HEALTH

COFLEX® VET +
COHESIVE BANDAGES

CATTLEWRAP®
COHESIVE BANDAGES



Self-adhering elastic bandages designed for protection and identification

Economical • Great for cold weather • Sweat & water-resistant

ovikhealth.com





BONDING TRACTION COMFORT

VETTEC BOVI-BOND RUBBER COW BLOCK 2.0 HAS IT ALL

- Positioning and anchoring points
- Small, Medium and Large Sizes
- Optimum glue distribution between the block and claw
- Ergonomically shaped to the bovine claw

NEW! Vettec Bovi-Bond Polyurethane Cow Block 2.0 - now available!




SYRFLEX HOOF WRAP

Quality assured hoof wrap used to secure topical treatments and provide a bandage from external elements.

15260	4" - orange - 100/box
18091	4" - hot pink - 100/box
16178	4" - red - 100/box



3M VETRAP

The professional's choice in self-adherent wraps. Layers "bond" together to provide superior support, allowing better fit and lower risk of bandage slipping.

30004	4" - hunter green - each
12949	4" black - each
12959	4" - red - each



WRAP BUSTER

Easily cut and remove wrap. Stainless steel blade is replaceable. Aluminum handle that is resistant to rust.

12463	18" with aluminum handle
12648	48" with aluminum handle
16298	blade only

Duct Tape

12625	2" - black - 60 yd	13966	2" - white - 60 yd
13963	2" - silver - 60 yd	13967	2" - orange - 60 yd
13964	2" - blue - 60 yd	13968	2" - yellow - 60 yd
13965	2" - green - 60 yd	13969	2" - red - 60 yd

Gauze & Additional Supplies



JORGENSEN CLING ROLL

18023	brown - 6" wide - 5 yards - 12 ct
19632	brown - 3" wide - 5 yards - ct



NEW WEAVE GAUZE SPONGE

15662	3" x 3" - 200/pk - 20 pk/case
15663	4" x 4" - 200/pk - 20 pk/case



JORVET COTTON ROLL

11534	1 lb
-------	------



NONSTERILE COTTON ROLL

24590	1 lb
-------	------



JUMBO COTTON BALLS

14033	200 ct
-------	--------



MEDLINE 200 GAUZE SPONGE

24691	4x4, 4-ply - 200 ct
-------	---------------------

WHY ARMOR ANIMAL HEALTH?

You work long hours - from sunup to sundown - to make your business successful. Our roots started with providing quality service and a fair price to our local dairy and beef farmers. Over time, our business has expanded to help other business (such as hoof trimmers, retail stores and veterinarians) so they may offer the same quality service and fair prices to their own customers.

We want to be the trusted partner that you know you can rely upon. Whether it has to do with on-farm animal health challenges, record management, product alternatives or even eye-catching retail store displays, our team is available to help you find the best solution that works for you and your business.



To learn more, visit ArmorAnimalHealth.com.



Contact Us

Beef & Dairy Producers

1240 Green Valley Road
Beaver Dam, WI 53916
800.255.1181 Fax: 920.885.2812
salessupport@vsi.cc

844 Bennie Road
Cortland, NY 13045
800.767.5611 Fax: 920.885.2812
salessupport@vsi.cc

1440 Action Drive SE
Mandan, ND 58554
888.930.9378 Fax: 701.663.9638
beeforders@vsi.cc

27058 Mueller Place Suite 1
Sioux Falls, SD 57108
800.255.1181
salessupport@vsi.cc

Wholesale

828 19th Avenue NE
St. Joseph, MN 56374
800.397.6972 Fax: 320.363.4798
wholesaleorders@vsi.cc

1240 Green Valley Road
Beaver Dam, WI 53916
844.840.7770 Fax: 920.885.2812
wholesaleorders@vsi.cc

Get the Hoof Trimmer eNews!

Scan the QR Code and sign up to receive the latest Hoof Trimmer specials and updates.

