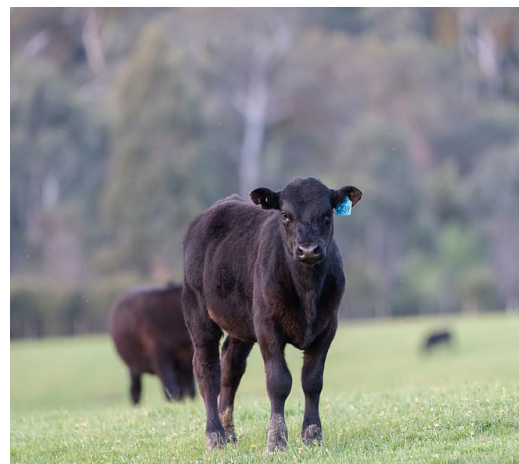


IMPLANTS



Implant Potency		
Low Potency	Moderate Potency	High Potency
Ralgro	Component E-S	Revalor – H
Synovex C	Compudose 200	Revalor - S
	Encore	Revalor - XS
	Revalor - G	Synovex One Feedlot
	Revalor – IH	Synovex Plus
	Revalor - IS	
	Synovex Choice	
	Synovex H	
	Synovex One Grass	
	Synovex S	

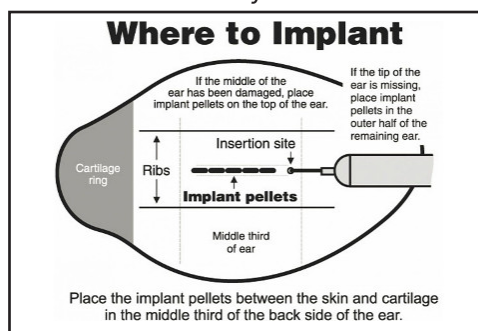


Administration:

- Has to go on the back side in the middle of the ear
- Use the gun from the manufacturer specific to implant
- Follow label directions
 - » Don't crush
- Improper placement can cause:
 - » Abnormal behavior
 - » Prolapses
 - » No activity

Implant Recommendations:

- Last implant should contain trenbolone
 - » Greatest increase in feed efficiency
- Implants will not replace proper management
 - » Nutrition
 - » Bedding/cleanliness
 - » Feed Management



Please note: Consult your Veterinarian if you have additional questions about implementing an Implant Program on your operation.

Expected Improvement from Using Implants

Suckling Calves (2 months - weaning) Less than 400 lbs	5-10% more gain
Growing Cattle (Over 400 lbs)	10-20% more gain, 6-8% more feed efficient
Finishing Cattle (Feedlot)	15% more gain, 8-10% more feed efficient

DETECT. DEFEND. DELIVER.

IMPLANTS



Cattle Implants	Approved Animals	Active Ingredient(s)	Approx. Re-Implant Interval (days)
Compudose	All Steers & Feedlot Heifers	Estradiol - 25.7 mg	170-200
Encore	All Steers & Feedlot Heifers	Estradiol - 43.9 mg	400
Ralgro	Calves, Stockers, Feedlot	Zeranol - 36 mg	70-100
Revalor - G	Calves, Stockers, Feedlot	Estradiol - 8 mg	100-140
Revalor - H	Feedlot Heifers	Estradiol - 14 mg	90-110
Revalor - IH	Feedlot Heifers	Estradiol - 8 mg Trenbolone Acetate - 80 mg	110
Revalor - IS	Feedlot Steers	Estradiol - 16 mg Trenbolone Acetate - 80mg	110
Revalor - S	Feedlot Steers	Estradiol - 24 mg Trenbolone Acetate - 120 mg	80-120
Revalor - XS	Feedlot Steers	Estradiol - 40 mg Trenbolone Acetate - 200 mg	200
Revalor - 200	Feedlot Steers & Heifers	Estradiol - 20 mg Trenbolone Acetate - 200 mg	130
Synovex C	Steers, Heifers	Estradiol Benzoate - 10 mg Progesterone - 100 mg	100-140
Synovex Choice	Feedlot Steers & Heifers	Estradiol Benzoate - 14 mg Trenbolone Acetate - 100 mg	120
Synovex H	Heifers > 400	Estradiol Benzoate - 20 mg Testosterone Propionate - 200 mg	100-140
Synovex One Feedlot	Feedlot Steers & Heifers	Estradiol Benzoate - 28 mg Trenbolone Acetate - 200 mg	200
Synovex One Grass	Steers, Heifers	Estradiol Benzoate - 21 mg Trenbolone Acetate - 150 mg	200
Synovex S	Steers > 400	Estradiol Benzoate - 20 mg Progesterone - 200 mg	100-140
Synovex Plus	Feedlot Steers & Heifers	Estradiol Benzoate - 28 mg Trenbolone Acetate - 200 mg	100-140
Component E-S w/ Tylan*	Steers > 400	Estradiol Benzoate - 20 mg Progesterone USP - 200 mg	120
Component E-H w/ Tylan*	Heifers > 400	Estradiol Benzoate - 20 mg Testosterone Propionate USP - 200 mg	120
Component TE-S w/ Tylan*	Feedlot Steers	Estradiol USP - 24 mg Trenbolone Acetate - 120 mg	120
Component TE-200 w/ Tylan*	Feedlot Steers & Heifers	Estradiol USP - 20 mg Trenbolone Acetate - 200 mg	130

DETECT. DEFEND. DELIVER.